



Oral Swab Collection Instructions

REGISTER ONLINE

Before proceeding, please register your kit at whatsyourmuttDNA.com to receive your results in a timely manner.

SWAB YOUR DOG

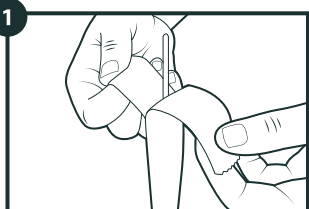
For optimal results, please read ALL steps before collecting samples!

Kit Contents:

- Mawi iSWAB vial
- 2 swabs
- Plastic “biohazard” bag with absorbent pad
- Barcode label (for lab use only)
- “Exempt Animal Specimen” label
- Return shipping label
- Shipping box (re-use to mail back the sample)

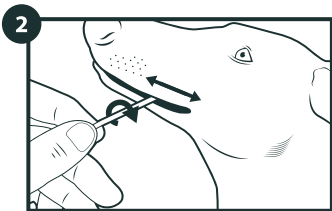
Important:

- Your dog should not eat or drink for at least 1 hour prior to having the sample collected.
- Do not touch the swab tips or allow them to contact any person, other animal, or object.
- You will be using both included swabs.



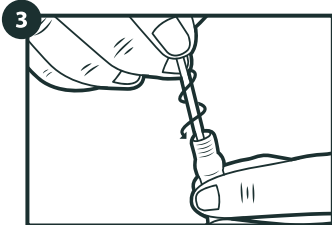
- 1 Place the vial standing up on a flat surface and unscrew the cap. Peel open the bag containing the swabs and remove the first swab.

FLIP FOR MORE

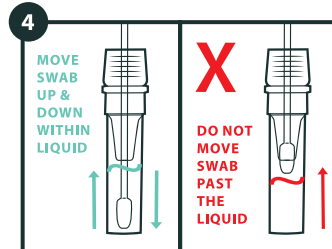


- 2 Rub the swab tip firmly against the inside of the cheek back and forth 15-20 times, using light pressure similar to brushing your teeth. **Swab only one side of your dog's mouth.**

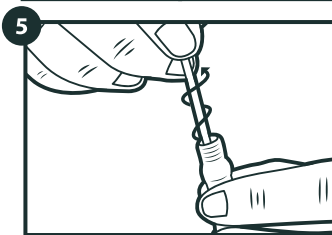
- a. It may be necessary to safely restrain your dog.
- b. Rotate the swab to enhance DNA collection.
- c. Ensure that the swab is wet to achieve the best DNA collection.



- 3 Pick up the vial and hold it steady in one hand. Slowly twist the swab into the iSWAB vial with a corkscrew motion. There will be resistance, but push the swab all the way to the bottom of vial.



- 4 Hold the vial steady and move the swab up and down rapidly inside the vial 10-15 times without moving the swab out of the liquid.



- 5 Hold the vial firmly and remove the swab by slowly twisting it out with a corkscrew motion. Discard the swab. **DO NOT PLACE SWABS IN THE BIOHAZARD BAG.**
- 6 Repeat steps 2-5 with the second included swab in the kit **on other side of dog's mouth** for increased DNA collection.
- 7 Replace the cap tightly and place the vial in Biohazard bag. Place the Biohazard bag with the vial back in the shipping box.

SHIP

Place the "exempt animal specimen" sticker on the outside of the box. Place the return shipping label over the original and reseal the box using the included stickers.